

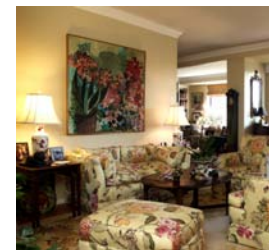
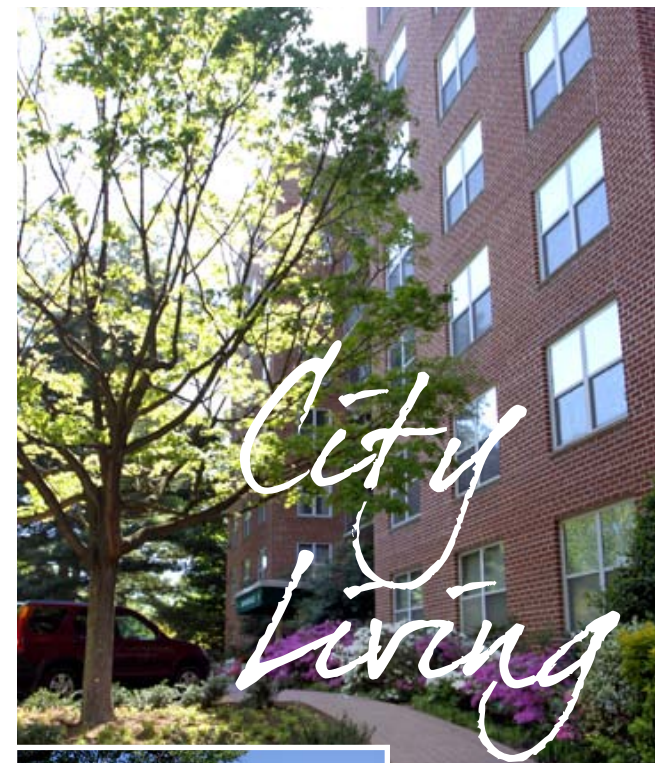
# SPECIAL FEATURES

- Pet-friendly for dogs and cats of all sizes
- Ample storage unit for each apartment
- Garden patios on ground-floor units
- Plenty of free outdoor parking for residents and guests
- Underground parking garage available for a monthly fee



# NEIGHBORHOOD

- Public transportation including an N2/6 bus stop at entrance to grounds, and Massachusetts Avenue and Wisconsin Avenue bus stops a short walk away providing easy access to Tenleytown, Dupont Circle and Foggy Bottom Metro stations
- On-grounds shops and services such as dry-cleaning and groceries in the adjacent Westchester
- Nearby stores and restaurants in areas like Glover Park, the National Cathedral neighborhood and Tenleytown



## TRANQUIL SETTING

3900 Watson Place NW  
Washington, D.C. 20016

[www.3900watsonplace.com](http://www.3900watsonplace.com)

For additional information,  
please call the General Manager

**202-338-8490**



# THE COOPERATIVE

- Two buildings connected by underground parking garage
- Beautifully maintained grounds with mature trees and colorful plantings
- On-site maintenance staff to provide overall upkeep and perform minor repairs at no charge
- Inclusive co-op fees that include electricity, heat, air conditioning, water and taxes
- Brand-new renovations of lobbies, hallways, elevators, electrical systems, and fire alarm system



# UNITS

- Various sizes ranging from one or two bedrooms to larger combined units
- Generous closet space with hallway, coat and bedroom closets
- Hardwood floors in every unit
- Large balconies, with great views, perfect for entertaining
- Central heat and air conditioning with individual temperature controls



# COMMON FEATURES

- 24-Hour Receptionist
- 24-Hour package delivery receipt and storage available
- Office services including copying and faxing available weekdays in Manager's Office
- Suite-like floors with short corridors and no more than 8 units per floor, only steps from the elevators

